

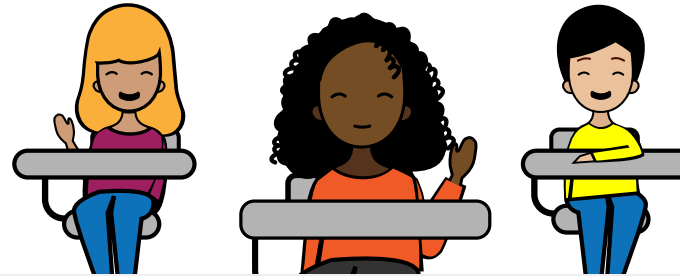
What to expect from NH schools  
and districts during the pandemic:

# Three instructional models for learning

The term “instructional model” is used here to mean a defined environment under which a teacher delivers instruction to students. The three most common instructional models employed by schools and districts during the COVID-19 pandemic are listed below.

## 1 In-person instruction

A teacher provides instruction to students in-person within a standard classroom environment



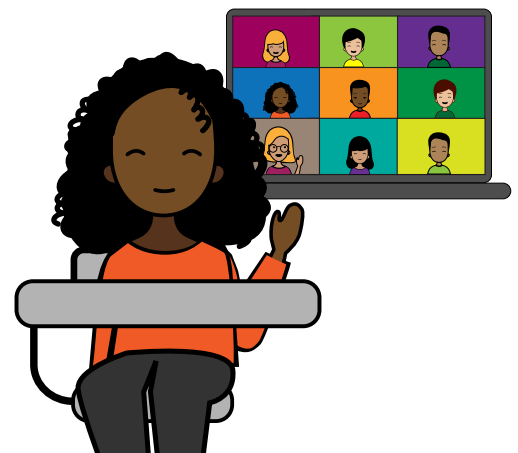
## 2 Fully remote instruction

A teacher provides instruction to students who are in a separate location from the teacher, typically using technology such as video-conferencing tools and digital learning management platforms



## 3 Hybrid instruction

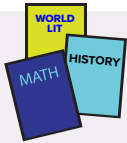
A teacher provides instruction to students using a combination of the previous two models, often employed as a rotating schedule during which some instructional days are in-person and some are remote



# What else should families expect from NH schools and districts during the pandemic?\*



The school or district employs one or more **instructional models** that are clearly defined and allow each student to demonstrate mastery of school, district and state competencies and grade level expectations with consistent formative and summative assessment practices



The school ensures that remote instruction models **deliver rigorous and relevant instruction** to students, in whatever instructional model is used\*\*



Every student is given a **consistent schedule** that includes the opportunity for regular, daily contact with teachers and school staff, direct instruction through synchronous or asynchronous models, independent student work and teacher office hours



Every student is provided with the **resources and materials** necessary to fully participate in the employed instructional model



The school has an **attendance policy** and procedure that is consistent with each instructional model, defines half-day and full-day attendance and is tracked to ensure that students are participating in the chosen model of instruction



**Teachers are properly supported and supervised** to ensure that they are meeting district and parent expectations for their students



The school has a **comprehensive communications plan** for developing and disseminating information to students, parents and the community, and for engaging and interacting with questions and feedback regarding the instructional model and student academic achievement



**For education related questions,  
call 603.271.3494**

For TDD Access:  
Relay NH 1.800.735.2964



**For public health related questions,  
call 603.271.4496**

After-hours: Call 603.271.5300 and ask for  
the public health nurse on call

\*To be used in conjunction with the NH Grades K-12 Back-to-School Guidance document:  
(<https://www.covidguidance.nh.gov/sites/g/files/ehbemt381/files/inline-documents/sonh/k-12-back-to-school.pdf>)

\*\*Instructional time is defined in ED306.02 (k) and means "the period of time during which pupils are actively working toward achieving educational objectives under the supervision or an educator or other staff member." While this is a broad definition, a good demarcation, particularly for circumstances when students will be working independently, is the availability of an educator or staff member to respond to questions. We want to avoid circumstances where students are assigned work to do without supervision to support them in the event they get stuck or have questions